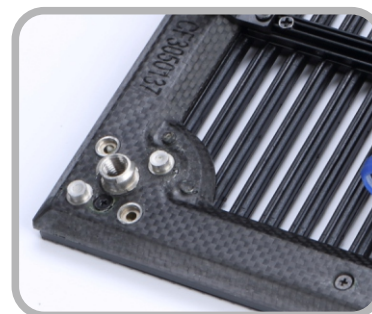
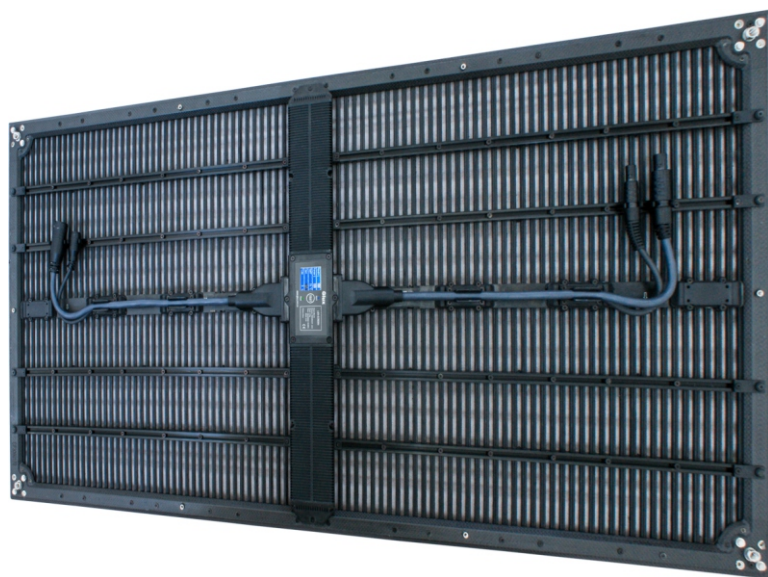


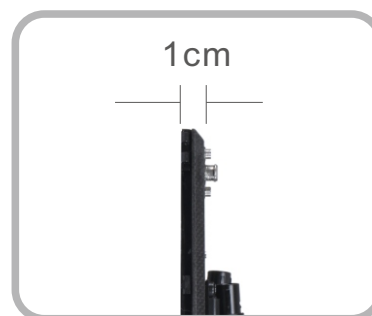
## Glux visual products

### BATn Series

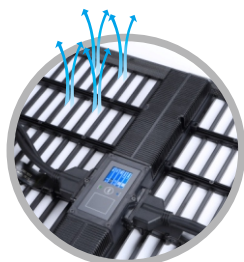
↙ The quality is in the details  
Using future technology, today.



◆ Carbon fiber construction



◆ Ultra-thin design & lightweight  
Only 9.4kg/sqm



High Transparency



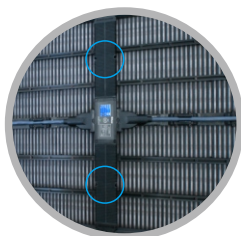
Usage Status Display



Test Button



ODU Connector & LAPP Cable (made in Germany)



Dual Power Supply System



45 Degree Curved Frame  
Suitable for 90 Degree  
Installation



◆ Modular design for  
convenient maintenance

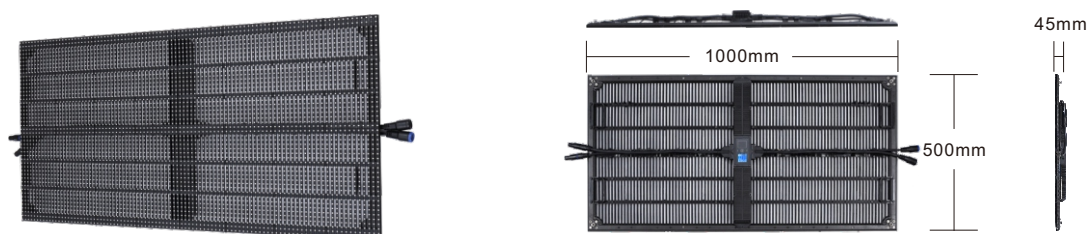
Glux Int'l Sales: A4, OCT Eastern Industrial Zone, Shenzhen, China  
Tel:+86-755-88866999 Fax:+86-755-86232733  
www.glux.cc/en www.glux.com.cn/en



## BAtn Series

An Outdoor and High Brightness curtain for large-scale setups

- ◆ A multi-purpose LED Outdoor curtain ideal for outdoor applications
- ◆ Adjustable single pixel modules allow for creative designs and applications
- ◆ Carbon Fiber materials guarantee its super thin and lightweight profile
- ◆ Angled edge structure allows for up to 90 degree curved assembly
- ◆ Optional backplates for non-transparency



Glux LED Display BAtn series					
Parameter	Type	BAtn 6C	BAtn10C	BAtn15C	BAtn20C
Pixel Pitch (mm)		6.94	10.4	15.6	20.8
Pixel Density (dots/m <sup>2</sup> )		20736	9216	4096	2304
Brightness (cd/m <sup>2</sup> )		5000	5000	5000	5000
Color Temperature (after calibration) (K)		6500	6500	6500	6500
Module Size (W x H x D) (mm)		1000 x 500 x 45	1000 x 500 x 45	1000 x 500 x 45	1000 x 500 x 45
Weight (kg/panel)		5	4.7	4.2	4.0
Weight (kg/m <sup>2</sup> )		10	9.4	8.4	8.0
LED Type		3535	3535	3535	3535
LED Chip		Epistar	Epistar	Epistar	Epistar
Horizontal / Vertical Viewing Angle (°)		H160 / V160	H160 / V160	H160 / V160	H160 / V160
Recommended Viewing Distance (m)		≥7	≥10	≥15	≥20
Contrast		2000:1	2000:1	2000:1	2000:1
Refresh Rate (Hz)		1200	1200	1800	3600
Grey Scale (bit)		R/G/B 16	R/G/B 16	R/G/B 16	R/G/B 12
Frame Rate (Hz)		50/60	50/60	50/60	50/60
Life Time (h)		≥75000	≥75000	≥75000	≥75000
Protection		IP65	IP65	IP65	IP65
Power Supply		Dual Power Supply	Dual Power Supply	Dual Power Supply	Dual Power Supply
Working Voltage(V)		AC 110~240	AC 110~240	AC 110~240	AC 110~240
Max Power Consumption (W/m <sup>2</sup> )		540	540	540	540
Avr Power Consumption (W/m <sup>2</sup> )		270	270	270	270
Working Temperature		-25 - 60°C	-25 - 60°C	-25 - 60°C	-25 - 60°C
Working Humidity		10% - 95%	10% - 95%	10% - 95%	10% - 95%
Drive Mode		1/6	1/3	1/2	Static
Cabinet Material		Carbon fiber	Carbon fiber	Carbon fiber	Carbon fiber
Video Signal Input Interface		DVI/HDMI/HDSDI	DVI/HDMI/HDSDI	DVI/HDMI/HDSDI	DVI/HDMI/HDSDI
Certification		CE/UL/FCC/TUV	CE/UL/FCC/TUV	CE/UL/FCC/TUV	CE/UL/FCC/TUV
Max Hanging (vertical)		1400kg	1400kg	1400kg	1400kg
Penetration Ration		35%	42%	60%	75%